



**Concorde - Corodex Group**

**Quality Solutions**  
for Safety and Security

**Fire Protection and Low Current Solutions**



# Company Profile

Concorde Technical and Corodex Agencies, part of Concorde - Corodex Group, provides solutions in fire protection and automation, fire rescue and safety, low current solutions. We pride ourselves on quality and cost effective engineering solutions in accordance with recognized international codes and standard systems.

As pioneers in the industry with more than 40 years experience, we've been leading in the industry with high-level expertise providing design, engineering, supply, installation and maintenance on products and projects.

We're proud to have partnered with many organizations, locally and internationally, providing our expert solutions, products, and services on many applications according to various requirements.

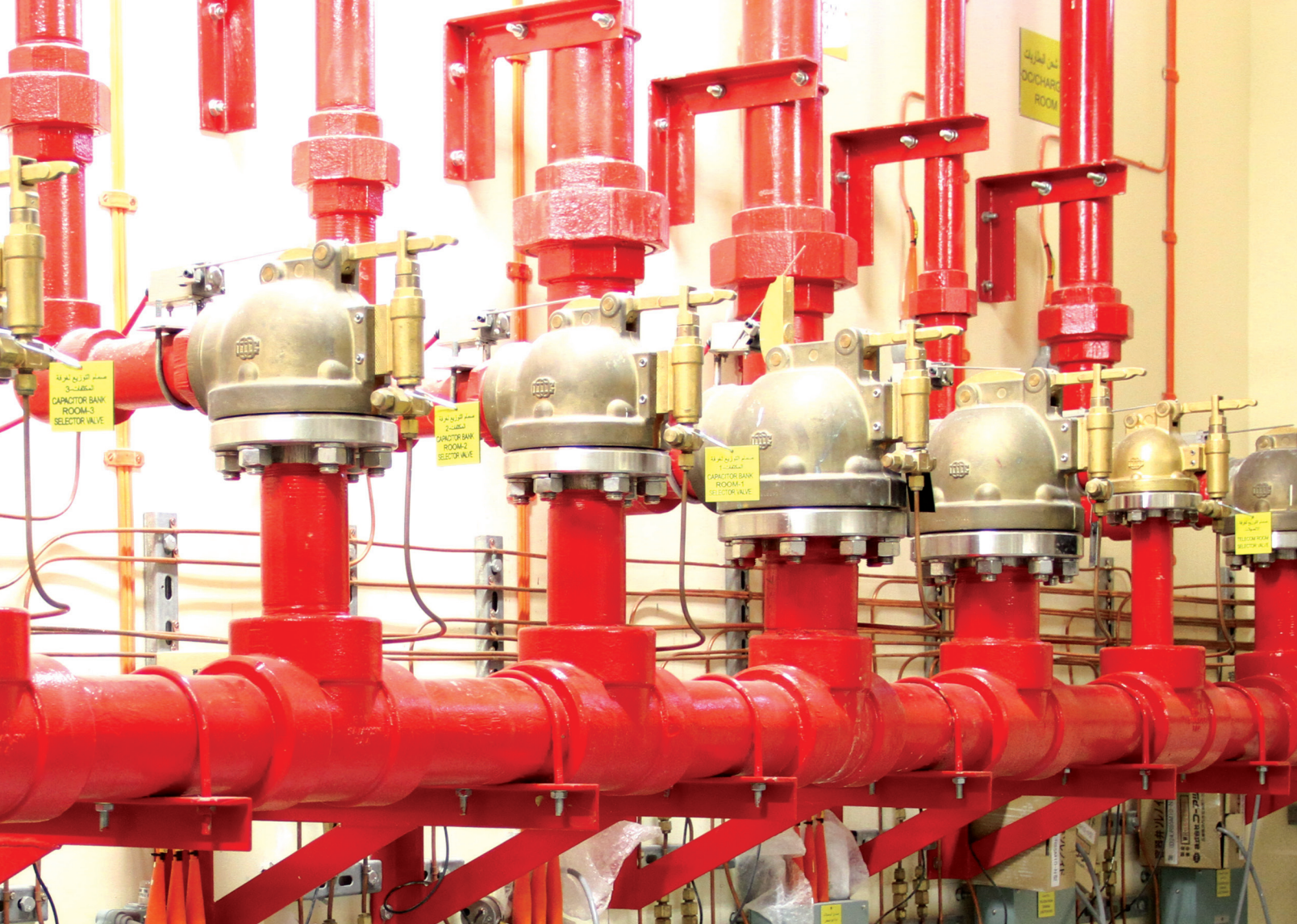
Concorde - Corodex Group is one of the Middle East region's pioneering providers of fire protection, water purification, wastewater treatment and environmental services. Established in 1974, the company has evolved to become a group of 23 individual companies offering a diverse portfolio of products and services such as water treatment services, marine and industrial chemical cleaning, industrial and specialty gases, firefighting, rescue and safety equipment.

Concorde - Corodex Group companies are proudly certified with Quality, Environment, Occupational Health and Safety Management Systems (QHSEMS) and in compliance with international standards such as ISO 9001:2015, ISO 14001:2015 and OHSAS 18001:2007.





Low Current Solutions	19
Security Solutions	21
Logical and Physical Access Control Solutions	22
Public Address and BGM Solutions	23
Audiovisual and Home Automation Solutions	24
Media Transport Solutions	25
Specialized Solutions	26
Emergency Solutions	27



## Fire Protection System

- Fire Detection and Alarm Systems
- Wireless Interlinked Smoke Alarm System
- FM200 and NOVEC 1230 Fire Suppression System
- Inert Gas (IG100) Fire Suppression Systems
- CO<sub>2</sub> Fire Suppression Systems
- Pressure Relief Dampers and Fire Extinguishant Gas Extract Units
- Hybrid (Water and N2 Gas) Fire Suppression System
- Wet Chemical Fire Suppression Systems
- Water Mist Fire Suppression System
- Sprinkler System
- Deluge / Pre-action System
- Gas Detection System
- Breathing Apparatus and Safety Equipment
- Passive Fire Protection System
- Firefighting Equipment
- Foam Systems
- Fire Water Tanks
- Fire Pumps
- Turbine Pumps



Concorde - Corodex Fire Protection Engineering Division, through its quality management procedures, high quality skilled and dedicated technical staff provides quality and cost effective engineering solution as per the latest recognized international codes and standard systems.

Following this objective, today the company plays a leading role in fire protection market which includes design, engineering, supply, and installation and maintenance of the complete range of products from internationally recognized and approved manufacturers.

Concorde - Corodex is closely associated with prestigious organizations and works hand in hand to provide the most optimum solutions for their varied applications and requirements.

**These organizations include:**

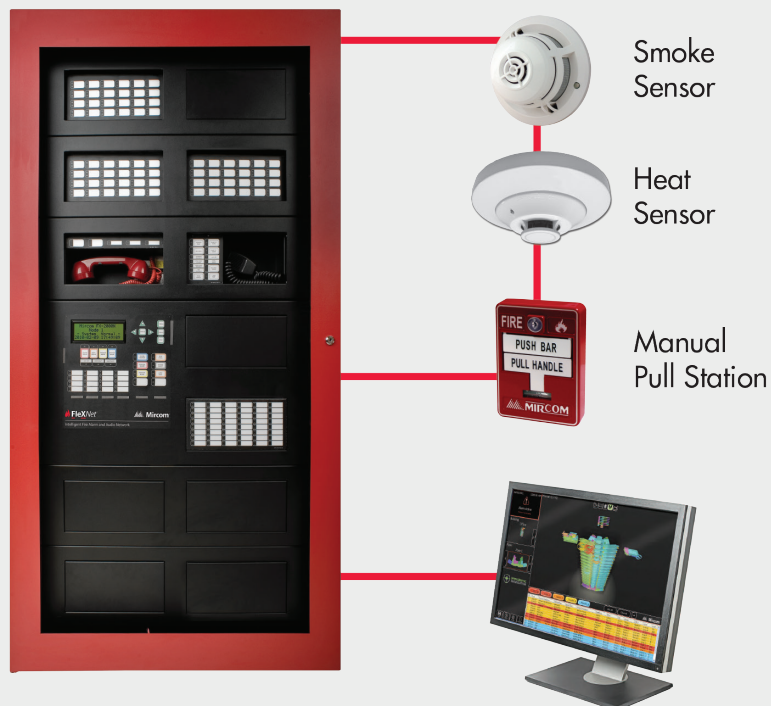
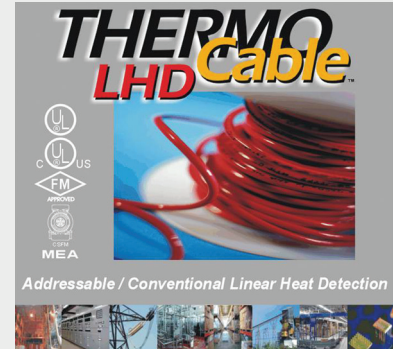
- Dubai Electricity and Water Authority (DEWA)
- Abu Dhabi Water and Electricity Authority (ADWEA)
- Abu Dhabi Transmission and Despatch Company (TRANSCO)
- Abu Dhabi National Oil Company (ADNOC)
- Abu Dhabi Company for Onshore Petroleum Operations (ADCO)
- Abu Dhabi Airports Company (ADAC)
- U.A.E DEFENCE
- ENOC - EPPCO
- EMARAT
- ETISALAT
- Dubai Aluminium (DUBAL)
- Dubai Municipality
- Federal Electricity and Water Authority (FEWA)





## Fire Detection and Alarm Systems

- Analog Addressable Systems and Conventional Systems
- Network Systems with graphic monitoring stations
- High Sensitivity Smoke Detection Systems
- Linear Heat Detection Systems
- Designed as per NFPA 72
- UL Listed and FM Approved



Four Stages of Fire



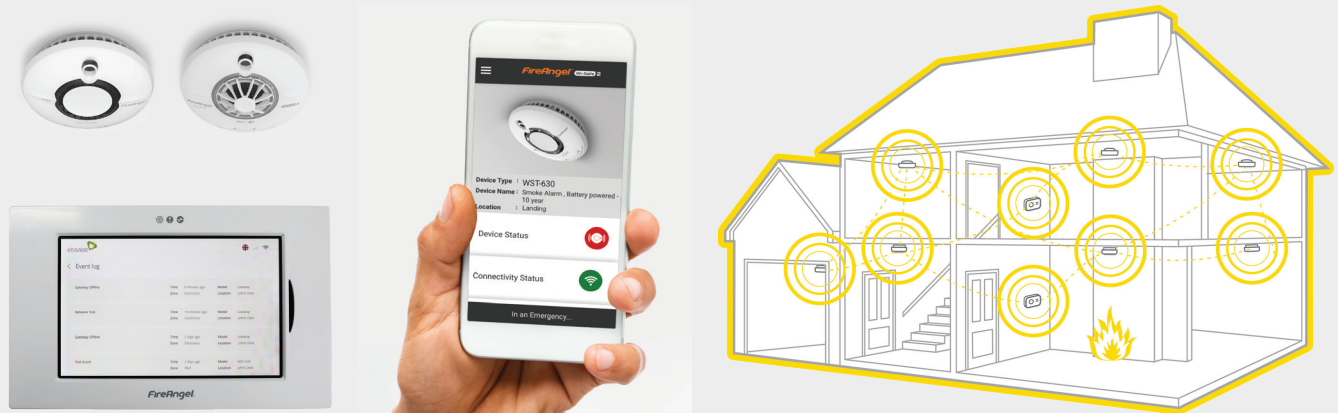
- Before Smoke
- No False Alarms
- Detects in All Four Stages of Fire



## Wireless Interlinked Fire Alarm System

Intelligent wireless fire alarm system is a must for people searching for the best protection in their homes.

This intelligent technology enables wireless communication with any other Wi - Safe 2 product. When one alarm sounds they all sound and up to 50 devices can be interlinked together. This message can be sent to an ATE then can be integrated with a monitoring station enabling all time security for your homes. When any alarm detects smoke, heat, or carbon monoxide (CO), a wireless module send a signal to all the connected alarms ensuring a fast reaction across the network.



### Enhanced Protection:

The Wi - Safe 2 range of products are designed to provide an enhanced level of fire and carbon monoxide safety for high risk individuals such as the deaf, those with mild to moderate hearing loss, children and people under the influence of alcohol or drugs.



### Simple Connection:

Wi - Safe 2 products can be linked together in a matter of seconds with a simple two button connection process. Wi - Safe 2 simplifies installation with no need for extra wiring, mess or fuss.



### Intelligent Locate:

The intelligent locate feature means on activation, pressing the test / silence button on any alarm in the network will silence all but the initiating alarm which has sensed smoke, heat or carbon monoxide.



### FM200 and NOVEC 1230 Fire Suppression Systems

- Cylinders available from 10Lbs to 1000Lbs capacity fast acting system suitable for computer, electrical rooms, telecommunication control rooms, art galleries and museums
- Designed as per NFPA 2001
- UL Listed and Fm Approved



### Inert Gas (IG100) Fire Suppression Systems

- The most environmentally friendly and human-safe fire suppression agent
- No adverse effects on the environment or objects protected
- Quick and cost efficient restoration after discharge
- No visual disturbance during discharge
- Central bank with selector valves to protect multiple hazards
- Designed as per NFPA 2001/JPN STD
- UL/JPN STD



### Inert Gas (IG155) Fire Suppression Systems

- The most environmentally friendly and human-safe fire suppression agent
- No adverse effects on the environment or objects protected
- No visual disturbance during discharge
- Central bank with selector valves to protect multiple hazards
- Designed as per NFPA 2001
- ULC/FM Approved





## CO<sub>2</sub> Fire Suppression Systems

- Low Pressure Systems
- High Pressure Systems
- Total Flooding
- Local Application
- Central bank with selector valves to protect multiple hazards
- Designed as per NFPA 12
- UL Listed and FM Approved



## Pressure Relief Dampers and Fire Extinguishant Gas Extract Units

All high pressure Fire Suppression Systems such as Inergen, Argonite, Carbon Dioxide and Nitrogen based products can cause large spike or pulse pressure in sealed rooms. This pressure must be vented to the atmosphere to prevent structural damage.

Designed to vent excess pressure in rooms caused by fire extinguishant gas released by fire suppression systems.

- 2 hours fire rated to BS EN 1634-1 2008
- Reference standards BS ISO 14520 & BS EN 15004
- Fire resistance classification to BS EN 13501-2-EW-120
- Wall sleeves and adjustable telescopic ducts available
- Optional security grilles and weather louvres
- Minimal maintenance and servicing



PUMA Fire Extinguishant (FE) Gas Extract Units are designed to remove fire suppression gases post discharge to atmosphere.



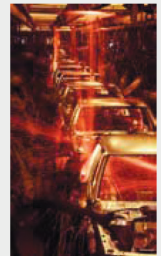
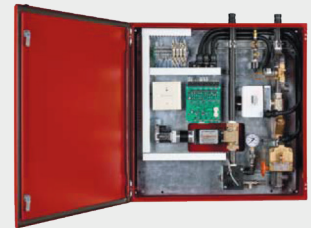
### Hybrid (Water and N2 Gas) Fire Suppression System

Victaulic Hybrid technology extinguishes fire via heat absorption and oxygen deprivation with minimal water presence.

The Victaulic Vortex Fire Suppression System is built on more than 85 years of Victaulic innovation and product development experience and provides the best capabilities of both water mist and inert gas systems.

The Victaulic Vortex System utilizes an active release system to discharge nitrogen upon activation.

- Simple, low-maintenance piping
- Easy access to cylinders for refill and inspection
- Scalable, expandable design
- Green design safe for the environment and personnel
- Nearly zero wetting of protected area
- Quick system recharge; minimal downtime
- Designed as per NFPA 750 and 2001
- FM Approved
- Effective for open space

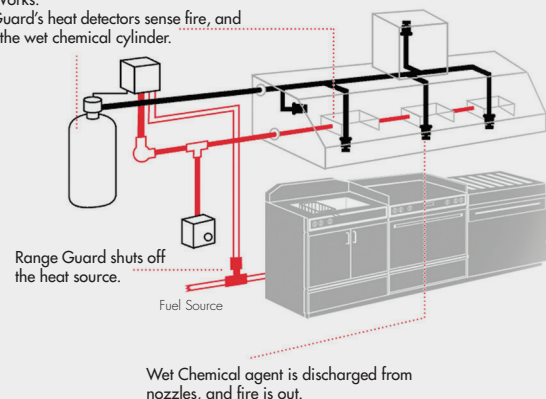


### Wet Chemical Fire Suppression Systems

- Suitable for kitchen hood protection
- Optimal versatility, safety and effectiveness
- Quick fire detection and suppression
- Superior wet chemical coverage that quickly suppresses fire and prevents reflash
- Quick clean up
- Designed as per NFPA 17A
- UL Listed

How it Works:

Range Guard's heat detectors sense fire, and activate the wet chemical cylinder.





## Water Mist Fire Suppression System

Conventional sprinklers and water spray systems fight fires by the process of wetting or cooling combustible surfaces with large water droplets. When compared to sprinkler droplets, our water mist particles are many times smaller. When these particles enter a fire plume, there is a rapid thermal exchange of heat which cools the fire and converts the water particle into a steam particle. The steam particle (with a volume twice that of air), displaces the oxygen surrounding the fire and helps to extinguish the fire. So with cooling, local oxygen depletion and radiant heat absorption, water mist is able to extinguish fires quick and effectively.

### Key Features:

- Uniformly reduces temperature of hot metal surfaces to prevent re-ignition
- Small droplets greatly reduce radiant heat transfer to other equipment and firefighting personnel
- Very small amount of water required compared to conventional sprinkler systems, large percentage of water discharged is converted to steam by fire
- Effective for scrubbing smoke and other toxic gases
- Collateral damage is minimized (heat reduction, scrubbing, small amount of water used)
- Various test protocols require fire extinguishment, not merely fire control
- Air tight enclosure not required as with clean agents and CO<sub>2</sub>
- Virtually unlimited discharge time - limited only by availability of water
- No downtime for recharge
- Extinguishing agent (water) is essentially zero cost
- May be furnished as self-contained system requiring no plant water or air/nitrogen

### Markets:

- |                                 |                            |
|---------------------------------|----------------------------|
| - Oil and Gas                   | - Semiconductor            |
| - Power and Utilities           | - Military Vessels         |
| - Pulp and Paper                | - Commercial Vessels       |
| - Automotive                    | - Offshore Oil Rigs        |
| - Agriculture / Food Processing | - Platform Supply Vessels  |
| - Transportation                | - Any other Sea-going Ship |



## Applications:

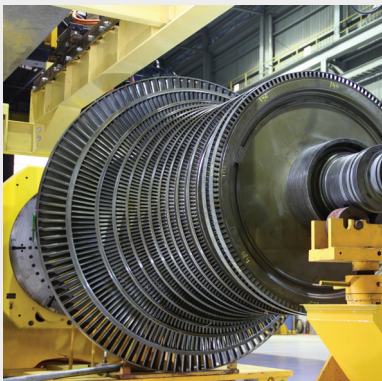
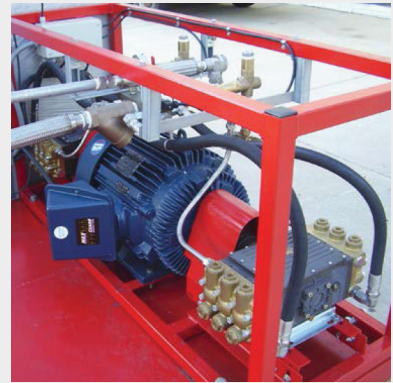
- Turbine generators / bearings
- Diesel generators
- Transformers
- Subway systems
- Pumps
- Cable tunnels
- Dip tanks
- Conveyors
- Printing presses
- Wet benches
- Data Centers

## Approvals:

- FM Approved
- IMO

## Marine Applications:

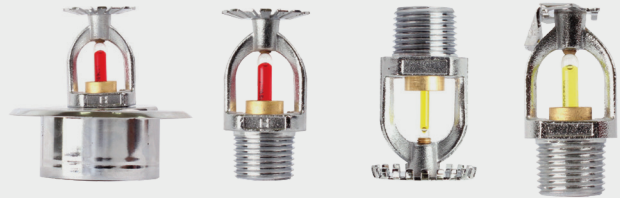
- Gas Turbines
- Diesel Generators
- Machinery Spaces
- Pump Rooms
- Oil Purifiers
- Boiler Fronts
- Incinerators
- Accommodation Spaces





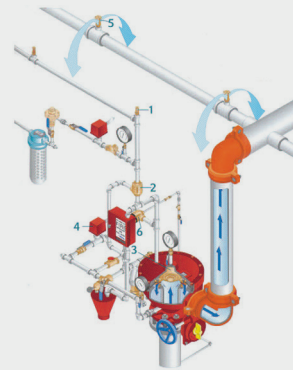
## Sprinkler System

- Automatic Wet Sprinkler System
- Wide range of sprinkler heads suitable for various type of hazards
- Designed to NFPA 13 standards
- UL Listed and FM Approved



## Deluge / Pre-action System

- Wet pilot, pneumatic or electric actuated systems suitable for transformers, reactors, cable galleries, LPG vessels, LPG storage tanks, oil storage tanks, etc
- Wide range of spray nozzles suitable for various types of hazards
- Designed to NFPA 15 standards UL Listed and FM Approved



## Gas Detection System

- Fixed and portable type gas detector / systems
- Flammable and toxic sensors
- Low maintenance
- Auto Compensation for detector contamination and aging
- UL Listed





### Safety Equipment

- Self Contained Breathing Apparatus
- Mobile Air Cart
- Escape Respirators



### Passive Fire Protection System

#### Fire protective coatings:

**KBS® Coating** is a water and weather resistant ablative coating, which has been in use all over the world since 1967 in interior as well as exterior applications.

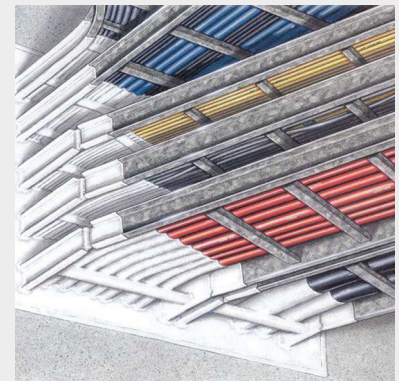
**KBS® Foamcoat** is an intumescent coating free of fibres for application in dry interior rooms.

#### Fire protective sealants:

**KBS® Sealant** is a high-viscous halogen-free sealant suitable for the filling of rigid, narrow joints as well as penetrations for cables.

**KBS® Sealant** can be used in indoor as well as outdoor application.

**KBS® Foamcoat HS** was developed especially for application in dry indoor rooms.



#### Cable Penetration Seals:

**KBS® Panel Seal** are used to close through-penetration fire-stops for cables and cable trays in walls and floors, smoke-gas tight and fire-resistant.

**KBS® Mortar** is a cementitious light weight mortar for the installation of cable penetration seals in walls and floors.

**KBS® Sealbags** are patented fire protective pillows, particularly suited for penetrations where there is a frequent requirement for retro-fitting or exchange of cables.

## Firefighting Equipment

- Automatic fire hose reels
- Landing valves
- Fire hoses and nozzles
- Fire cabinets
- Portable and mobile fire extinguishers
- Water monitors
- In accordance with international standards

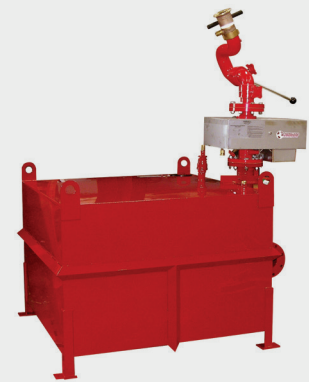


## Foam Systems

Chemguard has the largest and most diverse UL Listed high-expansion foam system product line in the industry, including high-expansion foam concentrates, portable handling nozzles, and water, electric and diesel powered high-expansion foam generators.

The AFFF products have 30-70% less fluorochemical content than other UL Listed products on the market, while the alcohol-resistant aqueous film-forming foam (AR-AFFF) has the lowest and best application rate in the industry.

- Low / medium / high expansion foam systems, wide range of proportioning systems to suit various requirements
- Bladder tank and in-line proportioning systems
- Subsurface foam injection system
- Foam deluge and foam pouring systems
- Oscillating foam monitors
- Suitable for oil storage tanks, bund protection, aircraft hangars, generator rooms, etc
- Designed to NFPA 11, 16, 409 standards
- UL Listed







### Fire Water Tanks

Manufactures, supplies, installs, carries out maintenance on, and repairs metal, bolted tanks for the storage of water and for other processes with different liquids.

The cylindrical tanks are available with a flat roof or with a conical roof, from 6 m<sup>3</sup> up to more than 4,000 m<sup>3</sup>.

All tanks are supplied with the liners and accessories needed for their installation, using the client's measurements, quality requirements, and keeping in mind the standards needed by the client.

The metal sheeting, whose dimensions are 2500 x 1250 mm, makes up the envelope and can be manufactured with different coatings and different thicknesses depending on the tank model.

#### The different coating options are:

- Continuous-cast galvanized steel
- Hot-dip galvanized steel, "discontinuous system"
- Hot-dip galvanized steel and painted in the plant or on the work site (epoxy paint, etc.): "Duplex System"
- Stainless steel, AISI 304
- Stainless steel, AISI 316
- Continuous-cast galvanized steel with a Zn+Al+Mg coating, "MAGNELIS," ZM310 and ZM430
- Black steel, painted in the plant or on the job site (epoxy paint, etc.)



## Fire Pumps

Patterson Pump Company is one of the world's leading suppliers of quality pumps for the Fire, Municipal, Industrial, Flood Control, Plumbing, and HVAC Markets. An extensive product offering serves our customers World-Wide.

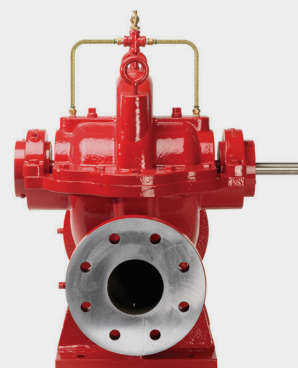
Three types of Patterson pumps are effective in fire control systems: the Horizontal Split Case, the Vertical Turbine and the Vertical In-Line. These fire pumps operate with pressures in excess of 390 psi and up to 5000 gpm.

Patterson Fire Pumps conform to, and in some cases surpass, the rigid standards set forth by approving and listing authorities. They are UL and ULC/cUL Listed, FM and NYBSA approved, and meet the requirements set forth by the National Fire Protection Association (Pamphlet No.20).

### Horizontal Split Case Fire Pumps:

Precision balancing of all rotating components provides mechanical dependability, reliable operation and minimal maintenance. Impellers are constructed with double inlets that practically eliminate end thrust while boosting operating efficiency.

The simple, split case design of these pumps allows for in-line service without disturbing piping while ensuring long, efficient unit life, reduced maintenance costs and minimal power consumption.





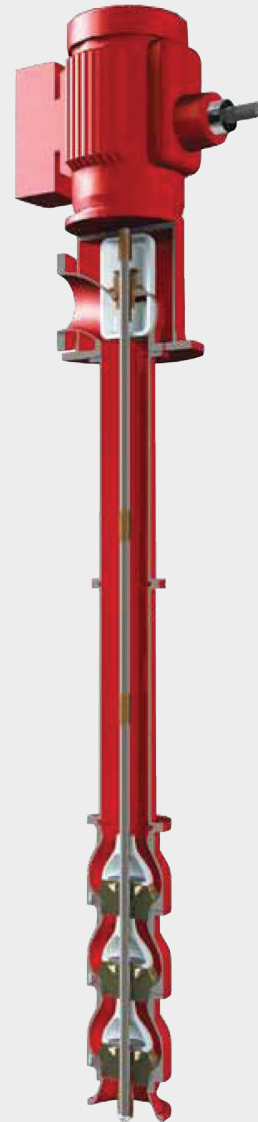
### Turbine Pumps

#### Latest vertical Turbine Technology Multi-purpose Vertical Turbine Pumps:

Patterson's patented Multi-purpose Vertical Turbine pumps are superior performing, solids handling, municipal/industrial pumps which offer the highest hydraulic performance, lowest rotor vibrations and noise levels. They are designed for easy integration into retrofit plans for water treatment, flood control, municipal / industrial water supply and more. Pumps discharge, motor and controller are above grade, allowing maintenance in a clean, safe environment. Components can be replaced without tear-down of the entire unit. Capacities range from 1,500 to 20,000 GPM.

#### Patterson Turbine Pumps:

The Patterson Vertical Pumps employ the latest design concepts and engineering technology in producing highly efficient pumps that are adaptable in a variety of industrial/municipal/power application, including fire pumps. They can be staged as necessary to meet desired pressure requirements. Minimum floor space is required, and the pumps operate in low NPSHA applications. Fire pump application capacities are from 500 to 4,500 GPM, with pressures up to 300 PSI. Non-fire pump application capacities are from 500 to 7,000 GPM, with up to 700 feet TDH.







## Low Current Solutions

- Security Solutions
- Logical and Physical Access Control Solutions
- Public Address and BGM Solutions
- Audiovisual and Home Automation Solutions
- Media Transport Solutions
- Specialized Solutions
- Emergency Solutions

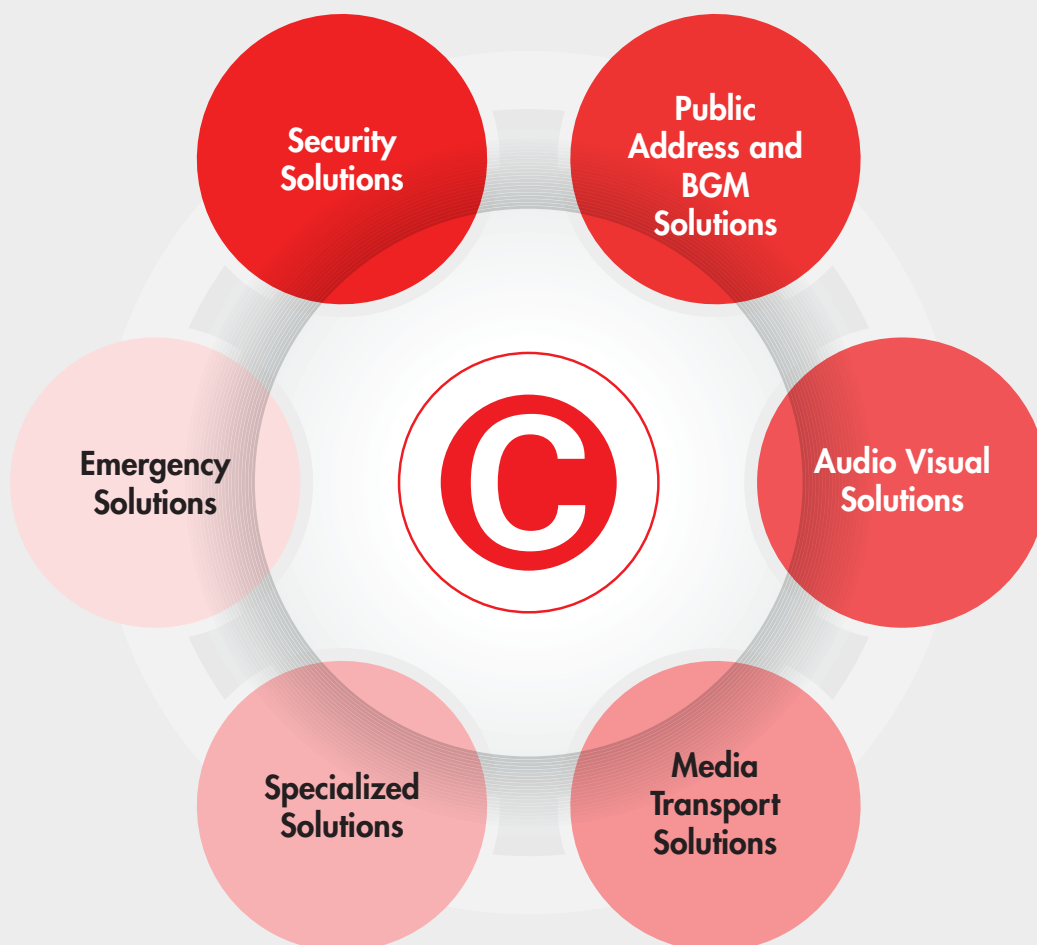
Approved by Dubai Police Academy - International Centre for Security and Safety.



Launched with the view of complementing the established system and service spectrum of Concorde - Corodex Group's Fire Protection Solutions, Low Current Solutions is the venture of CCG into extra low voltage and Integrated Communication Technology systems.

Powered by subject expertise of the dedicated design and implementation team members and backed by technology partnerships with various industry leading manufacturers, LCS can walk the customer through the entire project cycle from inception to implementation, maintaining the budget and duration discipline. LCS's focus is on providing innovative and integrated solutions for a variety of applications, environments and industries.

LCS offers turn-key solution comprising of consulting, system design, project management, procurement, installation, testing and commissioning, warranty support and post warranty maintenance services on the following range of technology systems.



## Security Solutions

### Surveillance Systems:

We, LCS, offer Scene to Screen video security solution comprising of cameras, video storage and management systems bringing quality, reliability and cost effectiveness to every project we undertake.

Wide array of camera types such as SD/HD, analogue/IP, day/night, IR, fixed/PTZ available from reputed brands complement the industry approved video surveillance solutions on offer.

Intelligent video management solutions employ video content analytic tools enabling facilities such as motion motion, tamper and loitering detection, left and removed object sensing, virtual border crossing, crowd detection, head count, speed detection and flow analysis with corresponding audible and visual alarm generation. Such special alarm handling capabilities are increasingly found in mission critical surveillance facilities such as border control, perimeter protection, traffic management, crowd management sought by various government and private agencies.

Night vision and demanding environment surveillance solutions are offered with specialized application products such as laser detection cameras, thermal detection cameras and fast deployment cameras systems catering to various niche market applications.



### Systems offered:

- IP and Analog CCTV cameras
- IR and Cool lighting
- Pan Tilt Zoom (PTZ) camera units
- Thermal and Laser Camera Systems
- Stand-alone and network video recorders
- Video Management Systems
- Intelligence (video content analysis)
- Video wall and display systems





### Logical and Physical Access Control Solutions

LCS offer logical access control solutions by means of biometric, numeric, proximity card and readers, multi-door controllers, Enterprise Security Management Systems for large multi-site/multi-tenant applications, network and alarm interfaces enabling customers to scale from a single door application to multi-door, multi-location access control networks.



Physical access control solutions comprising of full height and half height turn stiles, articulated and single arm gate barriers, motorized gate operators, automated road blocks etc with accessories such as signal beacons, control pillars, loop detectors and controllers, buried and mounted perimeter detection services for commercial and residential application interface and control platforms are combined to offer a total turn-key solution. Extensive safety features ensure safe and secure operation throughout the long years of operation.



Bespoke solutions on offer meet the requirements at hand, with the provision to accommodate ever growing demands of facilities and services, which could arise in the future.

#### **Surveillance Systems:**

- Proximity, numeric, biometric readers
- Fixed and centralized controller systems
- Enterprise access management systems
- RFID and active tag systems
- Motorized gate barriers and turn stiles
- Motorized bollards and road blocks
- Motorized gate operators
- Perimeter detection systems



## Public Address and BGM Solutions

Paging and back ground music networks comprising of paging speaker of ceiling, cabinet, column, pendent and horn speakers types, copper/fibre based network routers, amplifiers, multi-zone paging microphones, speaker and amplifier line monitoring facilities for scalable configuration with due approval from statutory authorities are offered with evacuation compliance system built in compliance with local civil defense standards.



Large arena, pro-audio applications such as places of worship, auditoriums, theatres demanding live audio routing and delivery for meeting demanding requirements are addressed by means of loud speakers, intelligent mixers, power amplifiers, speaker controllers, mixing decks, application specific wired and wireless microphones from reputed manufacturers.



Conference solutions comprising of digital discussion systems of wired and wireless conference units with secure sign-in, voting rights and integrated camera tracking facilities are offered along with simultaneous translation facilities for wide range of floor languages, with translation booths and terminals.



### Systems offered:

- Public address systems
- Background music and paging systems
- Analog paging solutions
- IP paging systems
- EVAC compliant PA Systems
- Conference and audio translation solutions
- Wired and wireless discussion units
- Stage and hall speakers
- Line array and fly series speakers
- Microphones, mixers and amplifiers



### Audiovisual and Home Automation Solutions

LCS provide state-of-art audiovisual facilities such as projectors, screens, FPD, projector lifts, customized mountings, pro-audio speakers, amplifiers, microphones, integrated control systems, touch panel/iPad enabled controls with custom-built control interfaces, etc along with enterprise level video and audio conference solutions and digital signage suits. Application specific solutions are offered for education, hospitality and healthcare industries.



Home Automation consisting of multi-channel audio-video display and distribution, home theatre systems such as 2D/3D projection, Cinema audio systems, theatre seating, weather control satellite master antenna systems, master media control and monitoring from touch panel enabled control systems. Specialist control and monitoring solution such as such as wireless CCTV, laser scan intrusion detection systems, audio video intercoms, solar energized motorized folding gates can be interfaced with touch panel control system enabled from smart phones, if so desired.



#### Systems offered:

##### Audiovisual

- Projectors and projection screens
- Flat panel displays
- LED/LCD wall displays
- Audio and video switching solutions
- Architectural interfaces
- Amplifier and speaker systems
- Microphones and mixer systems
- Control systems
- Wireless and wired control panels

##### Home Automation

- Web based security monitoring solutions
- Intrusion detection systems
- Audio video distribution
- Blinds and curtain controls
- Lighting control and interfacing
- Swing gate and garage gate operators
- Audio and video intercoms
- Satellite antenna distribution
- Home theatre systems



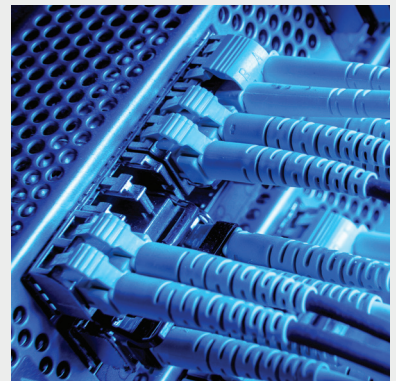
## Media Transport Solutions

Monitoring large area installation presents its own hurdles, since guards/monitoring team will be distracted by the number of individual images themselves.

LCS offers analog, virtual and intelligent matrix systems enabling effective monitoring of cameras irrespective of the number of cameras or number of sites involved, ensuring that no image is ever missed.



Matrix switches offer flexibility in CCTV installations, where large numbers of cameras are installed involved, by ensuring the alarm linked calling of particular cameras. Multiple alarm handling capacities can be alternatively built into scalable matrix systems by external alarm boxes.



Multi-location and far flung area surveillance quite often challenge project execution, hence LCS offers solution on fibre/copper media transport options.

Products and systems offered comprise of long distance video transport over copper, fibre optic extenders, video encoders, decoders, ethernet switches, media converters, ethernet extenders, network interface cards, POE Devices featuring rugged industrial designs, extended operating temperatures, and industry-proven standards to ensure non-stop operation of mission-critical applications in harsh environments.

### Systems offered:

- Hardened and unhardened switches
- Managed and unmanaged switches
- Gigabit and Ethernet media converters
- Ethernet extenders
- Fibre optic transport solutions
- Analog matrix switches
- Virtual Matrix Switches
- Matrix keyboards
- Keyboard Matrix
- Alarm matrix interfaces



### Specialized Solutions

**Master Clock Systems:** Global Positioning Satellite based time synchronization and Network Time Protocol devices are provided by means of master clock systems. Scalable and modular configurations are offered with POE powered backbone to ensure quick and easy setup of wired and wireless systems.

**Nurse Call Systems:** Providing systems from touch panel display based wireless version to conventional DECT based analog and IP Nurse Call, Distress Alarm and patient care solutions are offered. Fully scalable solutions comprising of speech and non-speech room stations options, code blue, push for help, and resident check-in constitute turn-key solution for modern patient care and staff protection facilities.

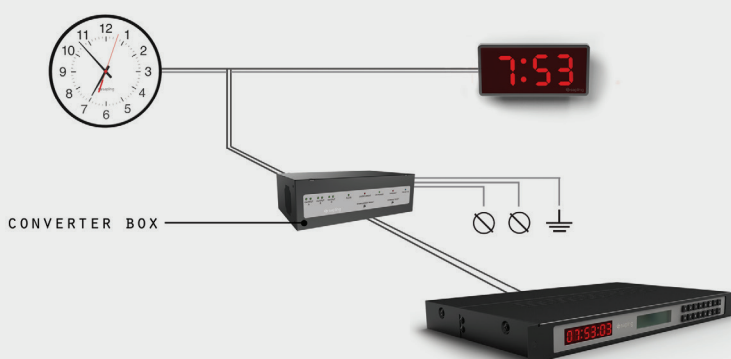
**SMATV/IPTV:** Solutions of RF and IF distribution systems consisting of antennas, dish, IPTV head-end configuration consisting of TV gateways, encoders, receivers, servers with IPTV management softwares along with fibre/copper backbone communication configuration are optional. Popularly used in hospitality applications, we provide interactive television from a range of leading manufacturers.

#### Intercom Systems:

Audio and video intercom systems for commercial and industrial application comprising of master station and field terminals, manageable over IP networks are offered for projects demanding high performance reliability under testing conditions.

#### Systems offered:

- Wired and wireless master clock systems
- IP master clock systems
- Wired and wireless nurse call systems
- Analog audio-video intercoms
- Industrial IP audio intercoms
- MATV systems
- IPTV/HITV System



## Emergency Solutions

### Emergency Lighting and Central Battery System:

Self contained, monitored system and central battery systems are offered. Since every situation is unique and demands a specific arrangement of the emergency lighting installation, standard and customized solutions demanding facilities such as group monitoring and monitoring individual luminaires are available.

The System offered meets the latest requirements with a wide range of LED luminaires and interactive monitoring and control units.

### Guard Tour Systems:

Based on Portable Electronic Sensors, Anti-vandal Protection System based Guard Tour detectors are offered to enable accurate data logging and collection, enforcing premises patrol requirements. Industry standard devices capable of withstanding vandalism attempts and able to report the attempts which ensure smooth operation and return on investment over the shortest period of time.

### Systems offered:

- Emergency Lighting System
- Central Battery System
- Key Tracker Systems
- Guard Tour System





## Concorde - Corodex Group

*Fire Protection, Water and Wastewater  
Treatment and Environmental Specialists*

### UAE

#### Abu Dhabi:

Concorde Trading Company  
Tel: +971 2 6668770 Fax: +971 2 6667863

#### Corodex Industries

Tel: +971 2 5503331 Fax: +971 2 5503332

#### Corodex Electromechanical Contracting

Tel: +971 2 6668771 Fax: +971 2 6667863

#### Al Jaddaf Electromechanical

Tel: +971 2 5503331 Fax: +971 2 5503332

#### Concorde Technical Est.

Tel: +971 2 5575551 Fax: +971 2 5575550

#### Bristol Vehicles Manufacturing Division

Tel: +971 2 5575551 Fax: +971 2 5575550

#### Al Ain:

#### Concorde Trading Company

Tel: +971 3 7212515 Fax: +971 3 7211254

#### Sharjah:

#### Corodex Agencies

Tel: +971 6 5430800 Fax: +971 6 5430801

#### Al Khubara

Tel: +971 6 5311830 Fax: +971 6 5311820

#### Dubai:

#### Corodex Trading Company

Tel: +971 4 3472900 Fax: +971 4 3472796

#### Corodex Industries

Tel: +971 4 3479895 Fax: +971 4 3479896

#### Efflo-Chem

Tel: +971 4 3472900 Fax: +971 4 3472796

#### Corodex Electromechanical Company

Tel: +971 4 5503331 Fax: +971 4 3470059

#### Corodex Marine Division

Tel: +971 4 3472164 Fax: +971 4 3472184

#### Corodex Agencies (Fire Protection Division)

Tel: +971 4 3472530 Fax: +971 4 3472501

#### Corodex Agencies (Safety and Rescue)

Tel: +971 4 3472900 Fax: +971 4 3472796

#### Bristol Fire Engineering

Tel: +971 4 3472426 Fax: +971 4 3472363

#### Bristol Gases

Tel: +971 4 3472426 Fax: +971 4 3472441

#### Bristol Speciality Gases

Tel: +971 4 3472436 Fax: +971 4 3472441

### Worldwide

#### Oman:

#### Integrated Engineering Solutions

Tel: +968 24700349 Fax: +968 24700168

#### Saudi Arabia

#### Concorde Advance Technical Solutions

Tel: +966 12 695 4993 Fax: +966 12 698 4991



**www.corodex.com**

#### Dubai Office (Corodex Agencies):

P.O.Box: 8756, Dubai, UAE

Tel: +971 4 3472530 Fax: +971 4 3472501

Email: fireandsecurity@corodex.com, www.corodex-fire.com

#### Abu Dhabi Office (Concorde Technical):

P.O.Box: 2617, Abu Dhabi, UAE

Tel: +971 2 5575551 Fax: +971 2 5575550

Email: fireandsecurity@concordeuae.com, www.concordeuae.com